



Elegance for your bath

Proudly made in Kansas, USA

105 Broadway St. Belvue, KS 66407

Ph. (800) 669-9867

Fax: (800) 393-6699

www.onyxcollection.com

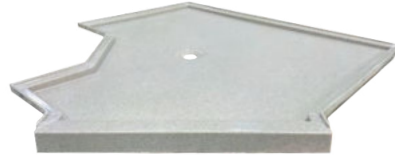
Shower Bases

Standard Bases

Our standard line includes over 90 sizes and style options, including many unique tub replacement sizes.



Standard Mid-Height Offset Drain



Neo-Single with 135° Corner Clip

Custom Bases

Our custom bases are made to the exact size and shape needed, creating a ready to install shower for any space.

Base Style & Options



Low Profile

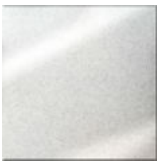
Mid Height

Full Height

Ramped

Shower Walls

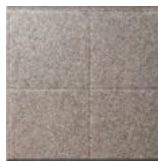
Onyx wall panels are available in almost any height, color, and design. An Onyx panel is approximately 3/8" thick and is a solid color throughout.



Gloss Smooth



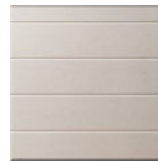
Subway Tile



12" x 12" Stone Tile



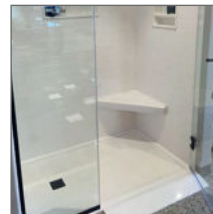
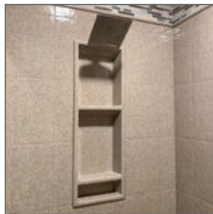
Wavy Tile



Shiplap



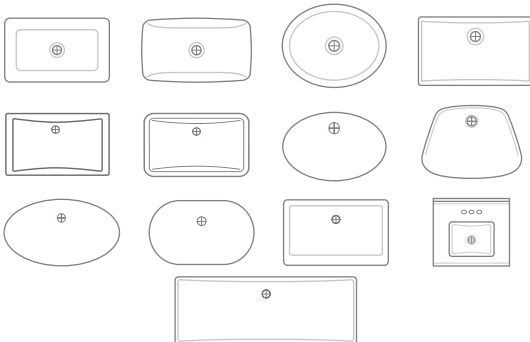
Shower Accessories & Trim



Over 40 Colors
Request Free Color
Samples at
www.onyxcollection.com

Lavatories

Our Vanity Tops can be made in many Standard sizes and almost any custom size and shape, using one of the many integral bowl styles, edge profiles, and color options to best compliment your bathroom.



Edge Styles

Edge Thickness





Yes! Guaranteed Forever

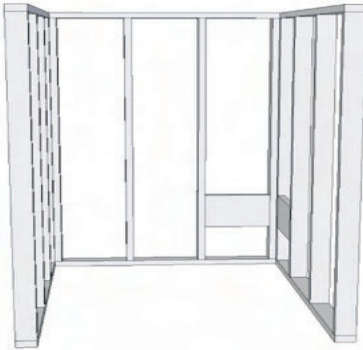
Store: _____
 Helped By: _____
 Phone: _____ - _____ - _____
 E-Mail: _____
 I will be here: _____
 Date: _____ Time: _____



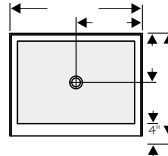
Trim Options



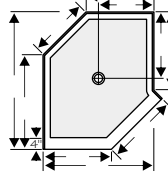
Shower Base Measuring Hints:



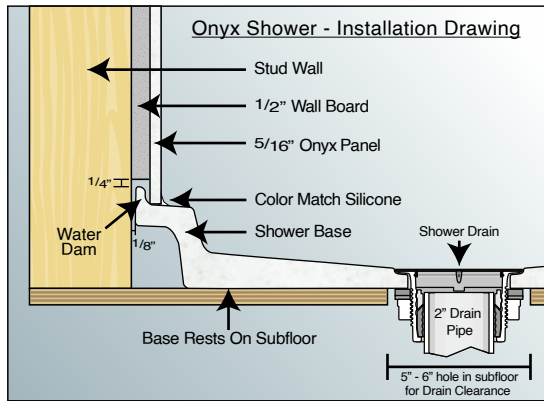
- Stud-to-stud measurements are the best
- How wide?
- How deep?
- Where is the drain located?
- How tall are the Onyx wall panels?



Most shower spaces will match one of our many standard sizes



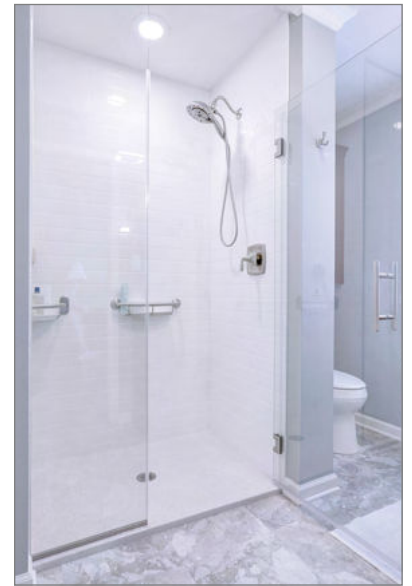
A Custom shower bases can be made almost any shape or size



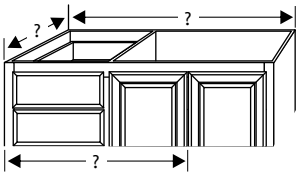
60 x 30 Low Profile Standard Offset Drain



36 X 36 Standard Mid Height



Lavatory Measuring Hints:



- Start with cabinet dimensions
- For each end that is not against a wall, add 1/2" for overhang
- Add 1" for overhang in the front, (add 1 1/2" for cabinets with full overlay doors)
- Center bowl between cabinet doors

