



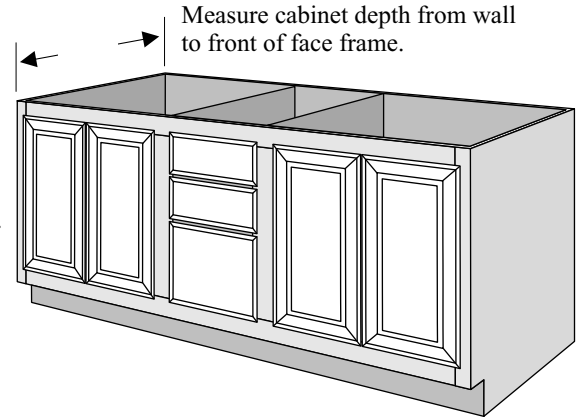
# LAVATORY DESIGN WORK SHEET

Belvue, KS 66407 \* (800) 669-9867 \* FAX (800) 393-6699 \* www.onyxcollection.com

## Double Bowl Lavatory

Answers to common questions:

- The dimensions of your vanity cabinet will tell you the correct dimensions and bowl layout of your Lavatory. Always give a good description of your cabinet.
- The center of each bowl should line up with the center between the cabinet doors.
- The Lavatory should overhang the cabinet in the front. The correct Lavatory depth should be 1" greater than the cabinet depth (1 1/2" for full-overlay doors).
- The Lavatory should overhang the cabinet on any ends that are not against walls. The correct Lavatory width should be greater than the cabinet width by 1/2" for each open end.
- A raised edge can be put on the front and both ends of a standard size, or on the front and only one end of a custom size.
- If a wall-side of the Lavatory is actually against a linen cabinet that is not as deep as the Lavatory, the corner that will stick out past the cabinet will also need to be finished. Always specify the depths of side cabinets.



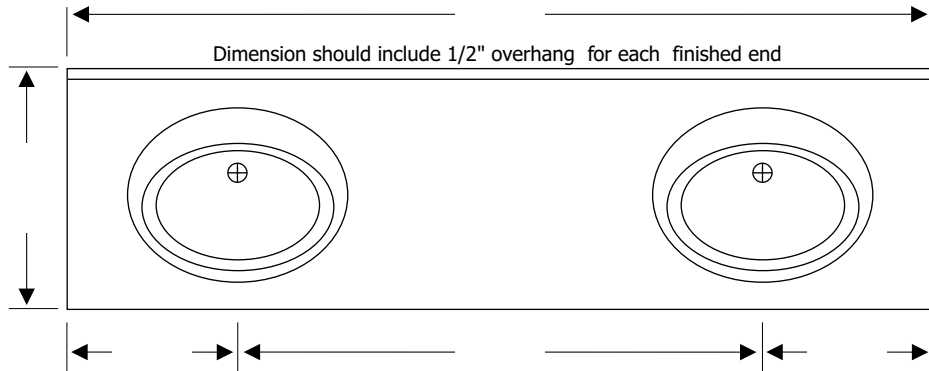
FINISHED EDGES:  Raised  Flat  Ogee

CABINET DOORS:  Standard Faceframe  Full-Overlay

LEFT SIDE:

- Finish
- Wall
- Sidesplash
- Short Linen

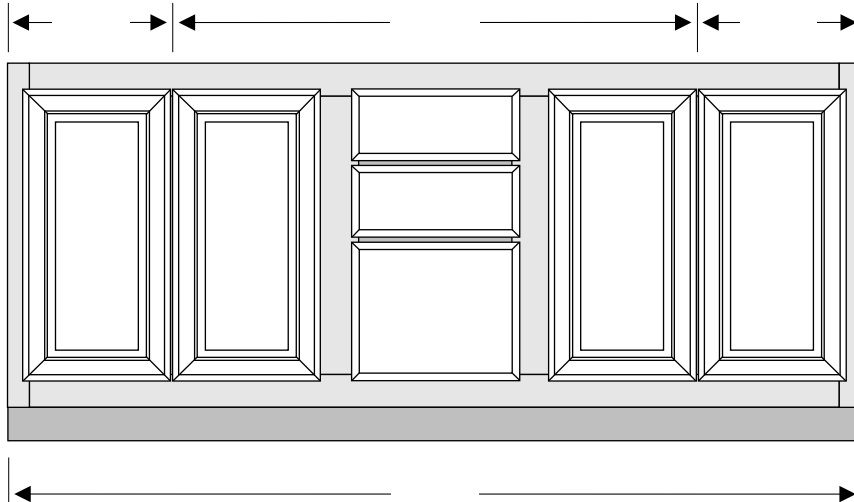
Depth of Linen or other Side Cabinet



RIGHT SIDE:

- Finish
- Wall
- Sidesplash
- Short Linen

Depth of Linen or other Side Cabinet



FILL IN THE DIMENSIONS AND FAX THIS TO US WITH YOUR ORDER FORM